



RESEARCH

Open Access

# Identification and characterization of a spontaneous ovarian carcinoma in Lewis rats

Allison C Sharrow<sup>2</sup>, Brigitte M Ronnett<sup>2,3</sup>, Christopher J Thoburn<sup>1</sup>, James P Barber<sup>1</sup>, Robert L Giuntoli II<sup>1,3</sup>, Deborah K Armstrong<sup>1</sup>, Richard J Jones<sup>1\*</sup>, Allan D Hess<sup>1</sup>

## Abstract

**Background:** Ovarian carcinoma is the fourth most common cause of death from cancer in women. Limited progress has been made toward improving the survival rate of patients with this disease in part because of the lack of a good animal model. We present here a model of spontaneous ovarian carcinoma arising in a normal Lewis rat.

**Methods:** A spontaneously occurring tumor of the left ovary was found in a normal Lewis rat during necropsy, which was sectioned for histological examination and placed into single cell suspension. Tumor cells were passaged *in vivo* by intraperitoneal injection into immunocompetent Lewis rats, and *in vitro* culture resulted in generation of a cell line. Tumor cells were examined by flow cytometry for expression of estrogen receptor  $\alpha$ , progesterone receptor, androgen receptor, her-2/neu, epithelial cell adhesion molecule, and CA125.  $\beta$ -catenin expression and cellular localization was assessed by immunocytochemistry. RNA was harvested for gene expression profiling and studying the expression of cytokines.

**Results:** The tumor, designated FNAR, could be serially transplanted into Lewis rats and propagated as a cell line *in vitro*, maintaining the properties of the original tumor. The FNAR cells displayed striking morphologic similarities to human ovarian carcinoma, resembling the endometrioid carcinoma subtype of surface epithelial neoplasms. The cells expressed estrogen receptor  $\alpha$ , progesterone receptor, androgen receptor, her-2/neu, epithelial cell adhesion molecule, CA125, and nuclear  $\beta$ -catenin. A gene expression profile showed upregulation of a number of genes that are also upregulated in human ovarian carcinoma.

**Conclusion:** This reliable model of ovarian carcinoma should be helpful in better understanding the biology of the disease as well as the development of novel treatment strategies.

## Background

Ovarian cancer is the fifth most commonly diagnosed cancer in women and the fourth most common cause of death from cancer [1]. The high mortality can be attributed to the high percentage of affected women presenting at an advanced stage, with spread within the peritoneal cavity [2,3]. With current therapies, including surgical debulking and platinum-based chemotherapy, patients in stage III or stage IV only have a 20% chance of long-term survival [2,3]. Better understanding ovarian carcinoma biology, as well as the development of new therapies for the disease, has been hampered by the lack of suitable animal models.

Current ovarian cancer models fall into three broad categories: rare spontaneous carcinomas, induced tumors, and human xenografts [4]. Although these models have allowed researchers to gain valuable insights into the biology of ovarian cancer, each model exhibits important limitations [4,5]. Spontaneous ovarian cancer has been observed in mice, rats, and hens [6-8]. The drawback to these models is that the cancers tend to occur at an advanced age and at similar low frequencies as in humans. The low incidence and the length of time required for the development of these tumors render them of limited use for studying the biology and treatment of ovarian carcinoma. Induced tumor models circumvent these problems but create their own artificial systems, which may not accurately reflect the human disease. In one model of *in vitro* transformation, ovarian surface epithelium

\* Correspondence: rjjones@jhmi.edu

<sup>1</sup>The Sidney Kimmel Comprehensive Cancer Center, Johns Hopkins University School of Medicine, Baltimore, MD, USA

cells are subcloned until they exhibit the loss of contact inhibition, the capacity for substrate-independent growth, cytogenetic abnormalities, and the ability to form tumors when injected subcutaneously and/or intraperitoneally into athymic mice [9]. This model, though, fails to account for critical interactions between the cancer cells and the host. Also, it is uncertain if these cells or their malignant transformation are representative of normal human cells or clinical disease.

Animal models have been generated by expressing simian virus 40 large T antigen [10], by inactivating p53 and Rb1 [11], by inactivating p53 and activating an oncogene [12], and through hormone treatment [13-15]. The high rate of cancer development in these animals makes these models attractive, but they may not reliably represent human cancer because a majority of these genetic changes usually do not occur in patients. Xenografts of human cancers have undergone continuous improvement over the past twenty years [16-19]. These models allow for direct examination of the human cancer but do not allow the study of the early stages of the cancer. These models also rely on an immune-deficient host, which eliminates the interaction between the cancer and the immune system.

We present a new model of ovarian carcinoma, designated FNAR, that spontaneously developed in an untreated, previously normal Lewis rat. The tumor could be serially passaged both *in vivo* as malignant ascites in rats and *in vitro*. Importantly, the biologic characteristics of the tumor closely paralleled one type of human ovarian carcinoma.

## Methods

### Animals

Female Lewis strain rats aged 4-6 weeks (purchased from Charles River Breeding Laboratories, Inc., Wilmington, MA) were kept in sterile micro-isolator cages and fed food and water *ad libitum*. The institutional guidelines of Johns Hopkins University concerning the care and use of research animals were followed. The animals were challenged intraperitoneally with graded numbers of FNAR cells and monitored daily for abdominal swelling. At various intervals after tumor challenge or when animals appeared moribund (pallor, lethargy, and marked abdominal distension), the animals were sacrificed by CO<sub>2</sub> asphyxiation and the cells within the peritoneal cavity harvested by flushing the abdomen with 35 milliliters of sterile phosphate buffered saline (PBS, Grand Island Biological Co., Gibco BRL, Grand Island, NY). At sacrifice, the animals were examined for tumor growth and tissues taken for histological examination.

### *In vitro* propagation and growth curve

A cell line (FNAR) that grows *in vitro* as an adherent monolayer was established by culture in RPMI 1640 (Gibco) supplemented with 10% fetal calf serum in 30 ml tissue culture flasks (Corning Flask 3056, Corning Inc., Corning NY). Cells used for experiments were low passage and maintained in culture for one to three months. The doubling time of the cell line was measured by plating 10<sup>4</sup> cells into macrotiter wells then harvesting and counting at 19.5, 43.5, and 115.5 hours.

### Flow Cytometric Analysis

Flow cytometry was utilized to assess *in vitro* FNAR cells for expression of known phenotypic markers. Briefly, 5 × 10<sup>5</sup> tumor cells were incubated in polystyrene tubes. Analysis of the intracellular antigens estrogen receptor  $\alpha$ , progesterone receptor, and androgen receptor first required fixation in 2% formaldehyde (Polysciences, Warrington, PA) in phosphate buffered saline (PBS, Gibco Invitrogen, Carlsbad, CA) for 15 minutes at 4°C followed by permeabilization with 0.1% Triton-X-100 (Sigma-Aldrich, St. Louis, MO) in PBS for 15 minutes at 4°C. The cells were then incubated for 30 minutes at 4°C with commercially purchased murine monoclonal antibodies. The concentrations of antibodies used are as follows: estrogen receptor (ER)  $\alpha$  at 8  $\mu$ g/10<sup>6</sup> cells (Abcam, Cambridge, MA), progesterone receptor (PR) at 16  $\mu$ g/10<sup>6</sup> cells (Affinity Bioreagents, Golden, CO), or androgen receptor (AR) at 2  $\mu$ g/10<sup>6</sup> cells (Pharmingen, San Diego, CA). The cells were washed and counterstained with phycoerythrin (PE) rat anti-mouse IgG<sub>1</sub> (Becton Dickinson, San Jose, CA) at 125 ng/10<sup>6</sup> cells for 30 minutes at 4°C. Commercially purchased murine monoclonal antibody to the rat c-neu oncogene product (Calbiochem, San Diego, CA) was used at 1  $\mu$ g/10<sup>6</sup> cells and was counterstained with PE rat anti-mouse IgG<sub>2a+b</sub> (Becton Dickinson, San Jose, CA) at 30 ng/10<sup>6</sup> cells for 30 minutes at 4°C. Tumor cells incubated with secondary antibody alone served as a negative control. Epithelial cell adhesion molecule (EPCAM) expression was analyzed using a PE-conjugated antibody (Santa Cruz, Santa Cruz, CA) at 1  $\mu$ g/10<sup>6</sup> cells with mouse IgG<sub>1</sub>-PE as a negative control (Becton Dickinson, San Jose, CA). A commercially available rabbit polyclonal antibody to CA125 (Abbotec, San Diego, CA) was used at 2  $\mu$ g/10<sup>6</sup> cells and counterstained with 1  $\mu$ g/10<sup>6</sup> cells APC goat anti-rabbit IgG (Invitrogen Molecular Probes, Carlsbad, CA). The cells were analyzed on a Becton-Dickinson FACSCalibur flow cytometer and data was analyzed using FlowJo (Tree Star, Inc, Ashland, OR).

### Immunocytochemistry

FNAR cells were plated onto four-well CultureSlides (BD Falcon, San Jose, CA). Cells were fixed in 2%

formaldehyde in PBS for 20 minutes followed by permeabilization in 0.5% Triton X-100 in PBS for 10 minutes. Cells were then incubated with a mouse monoclonal antibody to beta-catenin conjugated to Cy3 (Abcam, Cambridge, MA) at 6 µg/ml for one hour and counterstained with 500 ng/ml DAPI for five minutes (Invitrogen Molecular Probes, Carlsbad, CA). Images were captured using the Nikon Eclipse E800 (Tokyo, Japan) at 200× magnification with standard filters for DAPI and Cy3, the DS-QiMc digital camera (Nikon, Tokyo, Japan), and the Advanced Research Elements AR 3.0 software (Nikon, Tokyo, Japan).

#### Gene Expression Analysis by cDNA Microarrays

RNA was extracted and purified from cell lysates of  $1-5 \times 10^5$  *in vitro* FNAR tumor cells and the REH cell line of normal rat endothelial cells, as a control, with 500 µl Trizol reagent (Invitrogen, Carlsbad, CA). Tissue samples were frozen in liquid nitrogen and pulverized with a mortar and pestle. The powder was dissolved in Trizol and centrifuged. Purified RNA was dissolved in 20 µl diethyl-pyrocyanate-treated distilled water. The resulting RNA was analyzed at the Johns Hopkins microarray core. RNA from control and experimental samples was processed using the RNA amplification protocol described by Affymetrix (Affymetrix Expression Manual). Briefly, 5 µg of total RNA was used to synthesize first strand cDNA using the SuperScript Choice System (Invitrogen, Carlsbad, California) and oligonucleotide primers with 24 oligo-dT plus the T7 promoter (Proligo LLC, Boulder, Colorado). Following the double stranded cDNA synthesis, the product was purified by phenol-chloroform extraction and biotinylated anti-sense cRNA was generated through *in vitro* transcription using the BioArray RNA High Yield Transcript Labeling kit (ENZO Life Sciences Inc., Farmingdale, New York). Fifteen µg of the biotinylated cRNA was fragmented at 94°C for 35 minutes in buffer (100 mM Tris-acetate, pH 8.2, 500 mM potassium acetate, and 150 mM magnesium acetate), and 10 µg of total fragmented cRNA was hybridized to the Affymetrix GeneChip rat 230 2.0 array (Santa Clara, CA) for 16 hours at 45°C with constant rotation (60 rpm). Affymetrix Fluidics Station 450 was then used to wash and stain the chips with a streptavidin-phycoerythrin conjugate. The staining was then amplified as follows: blocking was performed using goat IgG, then a biotinylated anti-streptavidin antibody (goat) was bound to the initial staining, and amplification was completed by the addition of a streptavidin-phycoerythrin conjugate. Fluorescence was detected using the Affymetrix 3000 7G GeneArray Scanner and image analysis of each GeneChip was done through the GeneChip Operating System 1.4.0 (GCOS) software from Affymetrix using the standard default settings. For comparison

between different chips, global scaling was used to scale all probesets to a user defined target intensity (TGT) of 150.

#### Quantitative RT-PCR for Cytokine Expression

Quantitative RT-PCR (Taqman, Applied Biosystems, ABI, Foster City, CA) was utilized to assess levels of cytokine mRNA transcripts of *in vitro* FNAR cells as previously described [20]. The oligonucleotide primers and fluoresceinated probes for the cytokine genes (IL-6, IL-12, and IL-18), ER, PR, and stathmin were purchased from ABI. Data were analyzed in real-time with Sequencer Detection version 1.6 software, with the results normalized against mRNA transcripts for the housekeeping gene glyceraldehyde-3-phosphate dehydrogenase (GADPH).

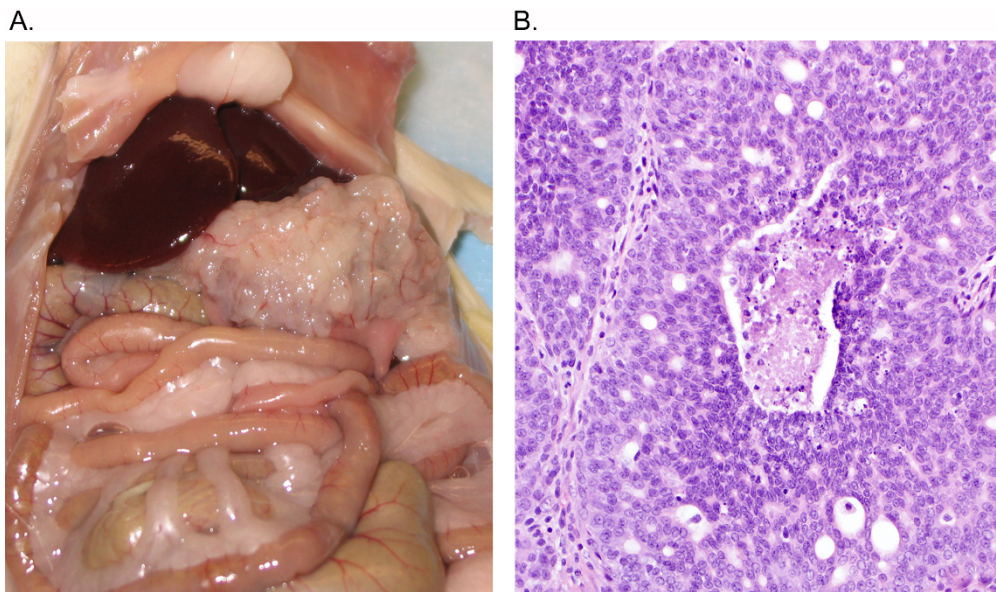
## Results

### Description of proband

Examination of a normal female Lewis rat sacrificed for harvesting normal splenic T cells showed a spontaneously occurring tumor (approximately 0.5 cm<sup>3</sup>) derived from the left ovary and attached to and invading the abdominal wall (Figure 1A). In addition, tumor studding was observed at several sites on the wall of the peritoneum, and ascites was present. Histologic evaluation revealed an epithelial neoplasm with features most consistent with an adenocarcinoma (Figure 1B). The tumor was composed of nests displaying admixed cribriform and solid architecture. The tumor cells had modest amounts of amphophilic/eosinophilic cytoplasm and relatively uniform, moderately atypical oval nuclei that were predominantly vesicular to modestly hyperchromatic with small nucleoli. Occasional mitotic figures and apoptotic bodies were noted, as was focal necrosis. Based on analogy to human ovarian epithelial tumors, this tumor most closely resembled a moderately differentiated endometrioid carcinoma (a cribriform variant of that subtype, with cells being less columnar than the classical human endometrioid carcinoma), with disease distribution paralleling a typical high-stage (human FIGO stage IIIB) ovarian carcinoma. Lymphocyte infiltration into the tumor mass was minimal at best, although numerous lymphocytes were present in the peritoneal fluid. The tumor was excised and pushed through a 100 micron wire mesh screen to obtain a single cell suspension.

### *In vivo* and *in vitro* growth characteristics

Normal Lewis rats were given either intraperitoneal (IP) or subcutaneous injection of graded numbers ( $5 \times 10^4$ ,  $1 \times 10^5$ ,  $5 \times 10^5$ , or  $1 \times 10^6$ ) of tumor cells. The animals were monitored daily for overall general health as well as degree of abdominal extension. The tumor repeatedly



**Figure 1 Gross and histologic examination of proband.** Intraperitoneal tumor arising spontaneously in a Lewis rat has pathologic appearance of an ovarian adenocarcinoma. (A) Proband shows tumor of the left ovary and intraperitoneal tumor studding. (B) Histology reveals an adenocarcinoma.

failed to grow subcutaneously, even with the administration of systemic immunosuppression (Cyclosporine, 10 mg/kg/d) or passage into thymectomized animals. However, all rats became moribund at 150-160 days after IP injection with  $5 \times 10^5$  or  $1 \times 10^6$  cells (Table 1). Rats injected with  $1 \times 10^5$  cells became moribund around 175 days. Rats receiving IP injections of  $5 \times 10^4$  cells generally did not appear ill by 6 months, but tumor cells were detected in the peritoneal cavity when sacrificed on day 175. Tumor growth recapitulated that seen in the initial rat with IP tumoral masses adhering to all of the visceral organs and the abdominal wall. Histologically, the tumors appeared to be of epithelial origin. Affected rats also showed enlargement of the ovaries and fallopian tubes, with a marked increase in

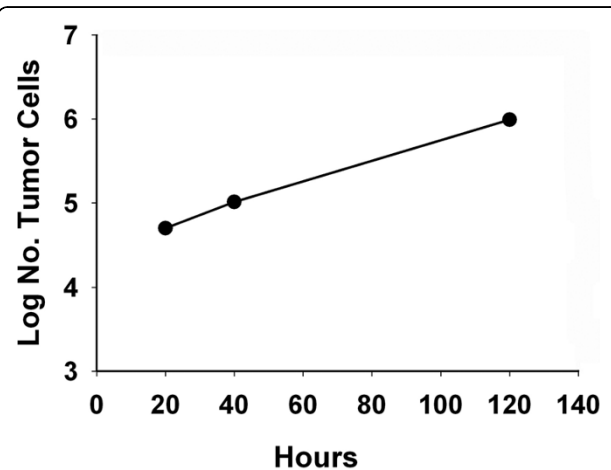
vascularization. Successful serial passage was conducted by IP challenge with  $1 \times 10^5$  tumor cells harvested by flushing of the peritoneal cavity.

The doubling time of the FNAR cell line was measured by plating  $10^4$  cells into macrotiter wells then harvesting and counting at 19.5, 43.5, and 115.5 hours (Figure 2). The slope of the line of log number of tumor cells versus hours estimates a doubling time of 22.9 hours.

**Table 1 Survival after intraperitoneal injection of FNAR cells.**

No. of Cells Injected	Survival Following Tumor Challenge	
	No. of Animals	Survival - Days (No. of Animals)
$5 \times 10^4$	N = 6	175 (6)
$1 \times 10^5$	N = 8	150 (4) 155 (3), 160 (1)
$5 \times 10^5$	N = 6	155 (2), 160 (4)
$1 \times 10^6$	N = 6	150 (5), 152 (1)

The survival time of rats corresponds to the number of FNAR cells injected intraperitoneally. Animals were observed daily for general health and abdominal extension. The animals were sacrificed upon becoming moribund, which was characterized by extreme lethargy, paleness, and abdominal extension. The abdominal cavity was examined histologically for the presence of tumor cells in the peritoneal fluid and for tumor masses attached to the visceral organs and the abdominal wall.

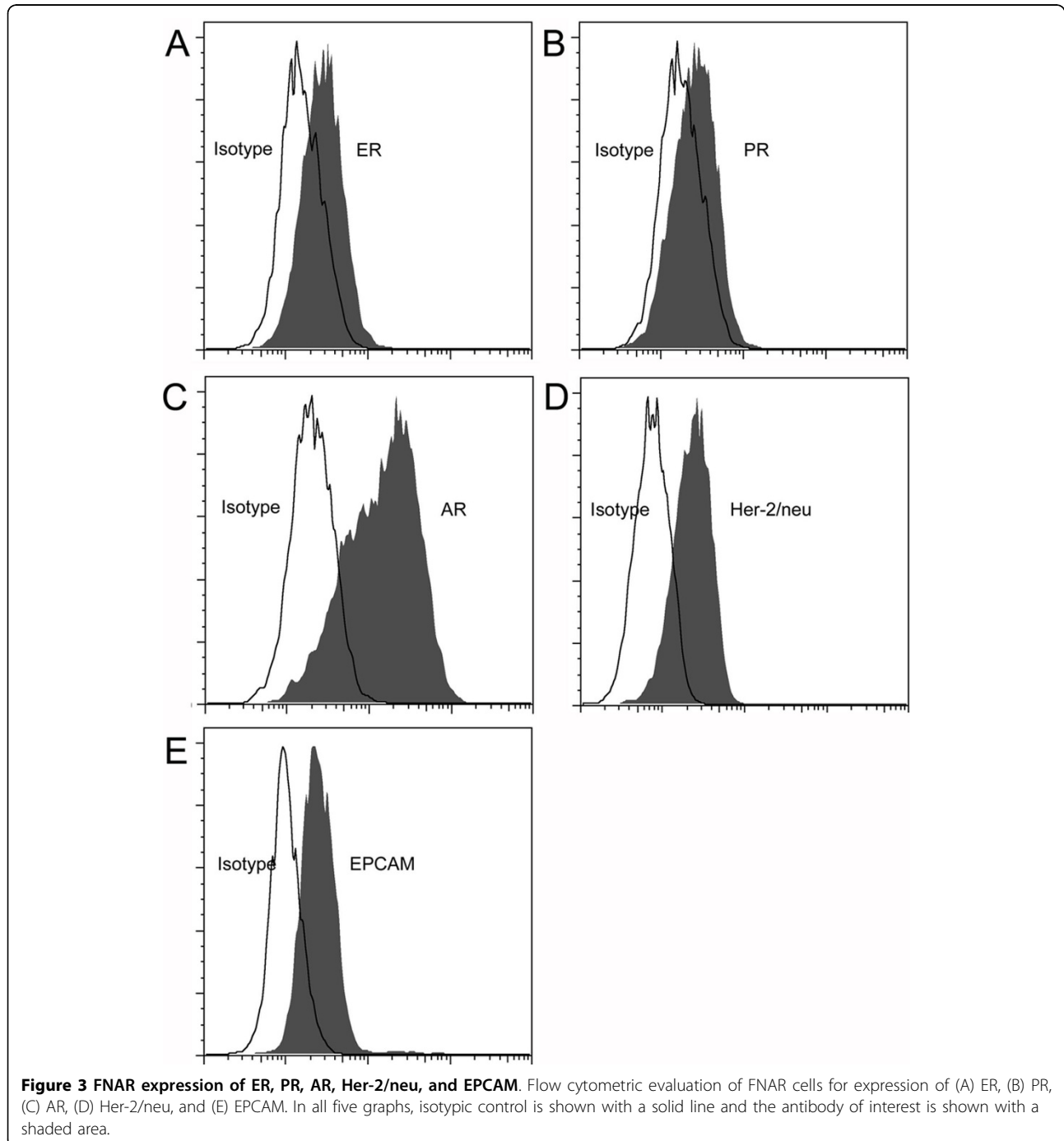


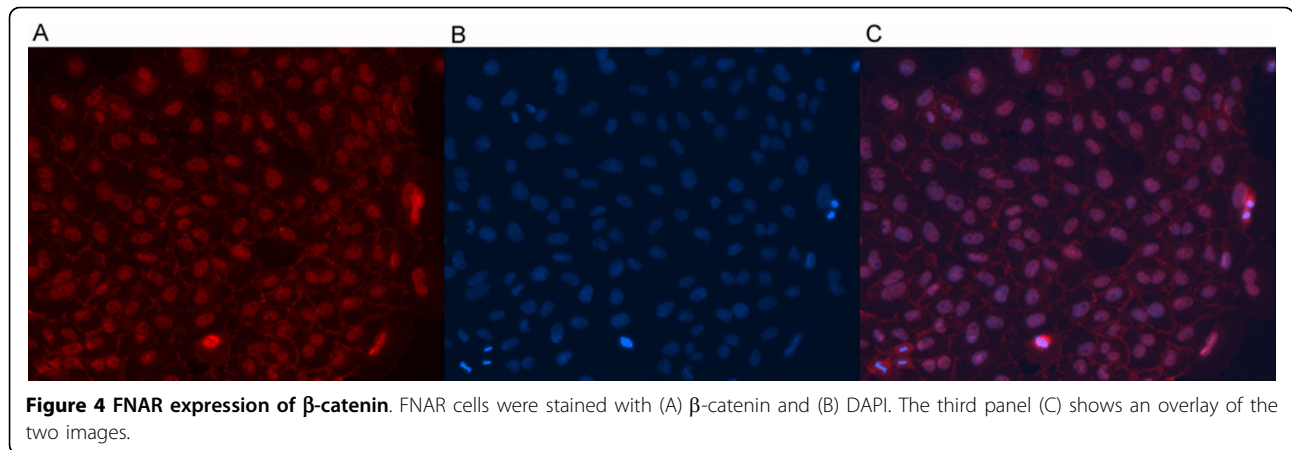
**Figure 2 In vitro growth characteristics.** *In vitro* doubling time was measured by plating  $10^4$  cells into large flat bottom macrotiter wells. At the designated intervals, cells were harvested and counted. Data is presented as log number of tumor cells versus growth time. The slope of the line represents an estimate of the doubling time.

### Biological characterization of FNAR

ER is detected in 60-90% of ovarian carcinomas [21-25], 25-50% express PR [21,23-26], and 45% expressed both [23,25]. AR is expressed in 50-70% of ovarian carcinomas [24,26]. Accordingly, in the appropriate clinical and pathologic setting, sex hormone receptor expression is characteristic of ovarian carcinoma [25,27]. The tumor expressed ER, PR, and AR by flow cytometry (Figure

3A-C), with ER and PR confirmed by PCR (data not shown). The tumor also expressed her-2/neu (Figure 3D), which is expressed in 25-35% of ovarian carcinomas [28,29]. The epithelial origin of this carcinoma was confirmed by its expression of EPCAM (Figure 3E). Consistent with previous reports of endometrioid carcinoma, FNAR cells display cell-surface expression of CA125 (MUC16, data not shown) [30]. FNAR cells also





show nuclear staining of  $\beta$ -catenin (Figure 4), which is strongly associated with the endometrioid subtype [31].

Gene expression profiling demonstrated that FNAR gene expression was similar to that reported for human ovarian carcinoma (Table 2). Metallothioneins are generally not found at immunohistochemically detectable levels in normal cells, but their expression increases in ovarian carcinoma with increasing grade [32-34]. Metallothionein I was overexpressed 11.38-fold in FNAR cells when compared to endothelial cells, and metallothionein II showed 3.56-fold increased expression. Thioredoxin expression correlates with cis-diaminedichloroplatinum resistance [35] and is expressed in FNAR cells 3.07-fold higher than in endothelial cells. Stathmin regulates microtubules during the formation of the mitotic spindle and is not expressed at detectable levels in normal cells; however, high-level expression is generally seen in ovarian carcinoma [36-38]. Accordingly, stathmin expression was 3.23-fold higher in FNAR cells than in endothelial cells. This data was confirmed by PCR (data not shown). A nuclear factor that it is involved in cell cycle progression, b-myb, is also highly expressed in both FNAR cells (3.33-fold) and human ovarian carcinoma [39].

High levels of interleukin-6 (IL-6), a proinflammatory cytokine and hematopoietic growth factor, are found in both normal ovarian epithelium and human ovarian

carcinoma [40,41]. Interleukin-18 (IL-18) is a proinflammatory cytokine that stimulates interferon- $\gamma$  production. Ovarian carcinoma expresses IL-18, but it is predominantly the pro-IL-18 form [42]. Interleukin-12 (IL-12) is a cytokine that encourages a  $T_H1$  immune response. IL-12 has been detected in ascites fluid and serum of ovarian cancer patients [43], although no reports have examined the expression of IL-12 by the ovarian carcinoma cells themselves. Expression of all three cytokines by FNAR cells was detected by real time RT-PCR (Figure 5).

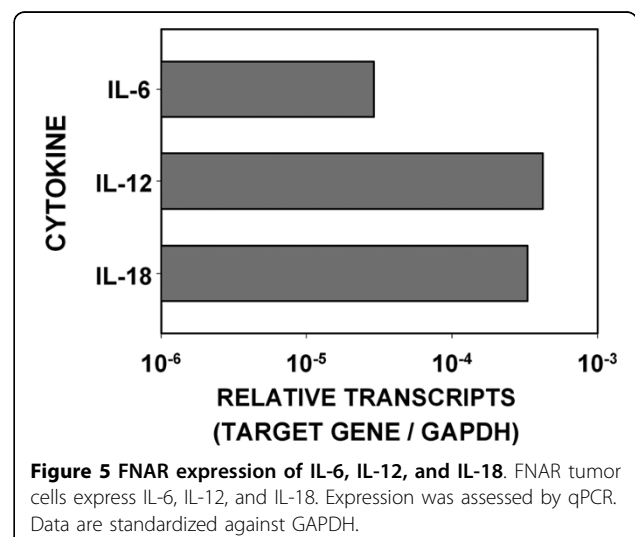
## Discussion

We present here a model of ovarian carcinoma, designated FNAR, that arose spontaneously in a normal Lewis rat. Importantly, FNAR's biology closely parallels the human disease. IP transplantation into rats produces malignant ascites and peritoneal carcinomatosis, leading to death at 5-6 months. The tumor only develops in the peritoneal cavity, suggesting the tumor

**Table 2 Gene chip analysis of FNAR.**

Gene Expression Profiling of FNAR Cells		
Gene Description	EST Accession #	Relative Expression
Metallothionein I	AW141679	11.38
Metallothionein II	AW916991	3.56
Thioredoxin	AW140607	3.07
Stathmin	BF281472	3.23
b-myb	RGIAC37	3.33

Gene chip analysis of FNAR shows similarities to human ovarian carcinoma. RNA was harvested from FNAR and REH endothelial cell lines and analyzed by GeneChip at a Johns Hopkins core facility. Data are presented as the relative expression of the gene in FNAR compared to expression in endothelial cells.



microenvironment is intact during formation. Cells from the tumor can be easily passaged *in vitro*, and the cell line shows similar growth characteristics when returned to rats. Its morphology and expression of EPCAM are consistent with an epithelial carcinoma, and like human ovarian carcinoma, it expresses her-2/neu, sex hormone receptors, and characteristic cytokines. FNAR also displays a similar gene expression pattern to the human disease. Consistent with the endometrioid subtype, FNAR cells show cell-surface expression of CA125 and nuclear expression of  $\beta$ -catenin.

The FNAR model may address many of the limitation of current model systems for ovarian carcinoma. Rats transplanted with FNAR consistently become moribund by 5-6 months, avoiding the low frequency and long latency of spontaneous animal models. Xenografts of primary human tumors in immunodeficient mice are perhaps the most attractive current model [16-19]. Although spontaneous human cancers can be studied and used to test treatments in these mice, the study of immunotherapeutic approaches is problematic. Conversely, FNAR develops in immunocompetent rats, allowing the study of immunotherapeutic approaches. The expression of all three sex hormone receptors and her-2/neu also allows for manipulations of these pathways using this model. However, the application of this model to the treatment of human disease remains to be established.

#### Author details

<sup>1</sup>The Sidney Kimmel Comprehensive Cancer Center, Johns Hopkins University School of Medicine, Baltimore, MD, USA. <sup>2</sup>Department of Pathology, Johns Hopkins University School of Medicine, Baltimore, MD, USA. <sup>3</sup>Department of Gynecology and Obstetrics, Johns Hopkins University School of Medicine, Baltimore, MD, USA.

#### Authors' contributions

AS, RJ, and AH designed research. AS, CT, BR, and JB performed research. RG, DA, and CT gave assistance in analyzing model. AS, RJ, AH, and BR wrote manuscript. All authors have read and approved the final manuscript.

#### Competing interests

The authors declare that they have no competing interests.

Received: 1 October 2009 Accepted: 31 March 2010

Published: 31 March 2010

#### References

- Jemal A, Tiwari RC, Murray T, Samuels A, Ward E, Feuer EJ, Thun MJ: **Cancer Statistics, 2004.** *CA Cancer J Clin* 2004, **54**:8-29.
- Cannistra SA: **Cancer of the ovary.** *The New England Journal of Medicine* 1993, **329**:1550-1559.
- Armstrong DK, Bundy B, Wenzel L, Huang HQ, Baergen R, Lele S, Copeland LJ, Walker JL, Burger RA: **Intraperitoneal Cisplatin and Paclitaxel in Ovarian Cancer.** *N Engl J Med* 2006, **354**:34-43.
- Garson K, Shaw TJ, Clark KV, Yao D-S, Vanderhyden BC: **Models of ovarian cancer—Are we there yet?.** *Molecular and Cellular Endocrinology* 2005, **239**:15-26.
- Vanderhyden B, Shaw T, Ethier J-F: **Animal models of ovarian cancer.** *Reproductive Biology and Endocrinology* 2003, **1**:67.
- Beamer WG, Hoppe PC, Whitten WK: **Spontaneous Malignant Granulosa Cell Tumors in Ovaries of Young SWR Mice.** *Cancer Res* 1985, **45**:5575-5581.
- Walsh KM, Poteracki J: **Spontaneous Neoplasms in Control Wistar Rats.** *Fundamental and Applied Toxicology* 1994, **22**:65-72.
- Fredrickson TN: **Ovarian Tumors of the Hen.** *Environmental Health Perspectives* 1987, **73**:35-51.
- Godwin AK, Testa JR, Handel LM, Liu Z, Vanderveer LA, Tracey PA, Hamilton TC: **Spontaneous Transformation of Rat Ovarian Surface Epithelial Cells: Association With Cytogenetic Changes and Implications of Repeated Ovulation in the Etiology of Ovarian Cancer.** *J Natl Cancer Inst* 1992, **84**:592-601.
- Connolly DC, Bao R, Nikitin AY, Stephens KC, Poole TW, Hua X, Harris SS, Vanderhyden BC, Hamilton TC: **Female Mice Chimeric for Expression of the Simian Virus 40 Tag under Control of the MISIR Promoter Develop Epithelial Ovarian Cancer.** *Cancer Res* 2003, **63**:1389-1397.
- Flesken-Nikitin A, Choi K-C, Eng JP, Shmidt EN, Nikitin AY: **Induction of Carcinogenesis by Concurrent Inactivation of p53 and Rb1 in the Mouse Ovarian Surface Epithelium.** *Cancer Res* 2003, **63**:3459-3463.
- Orsulic S, Li Y, Soslow RA, Vitale-Cross LA, Gutkind JS, Varmus HE: **Induction of ovarian cancer by defined multiple genetic changes in a mouse model system.** *Cancer Cell* 2002, **1**:53-62.
- Keri RA, Lozada KL, Abdul-Karim FW, Nadeau JH, Nilson JH: **Luteinizing hormone induction of ovarian tumors: Oligogenic differences between mouse strains dictates tumor disposition.** *Proceedings of the National Academy of Sciences* 2000, **97**:383-387.
- Bai W, Oliveros-Saunders B, Wang Q, Acevedo-Duncan ME, Nicosia SV: **Estrogen stimulation of ovarian surface epithelial cell proliferation.** *In Vitro Cellular & Developmental Biology - Animal* 2000, **36**:657-666.
- Silva EG, Tornos C, Deavers M, Kaisman K, Gray K, Gershenson D: **Induction of Epithelial Neoplasms in the Ovaries of Guinea Pigs by Estrogenic Stimulation.** *Gynecologic Oncology* 1998, **71**:240-246.
- Hamilton TC, Young RC, Louie KG, Behrens BC, McKoy WM, Grotzinger KR, Ozols RF: **Characterization of a Xenograft Model of Human Ovarian Carcinoma Which Produces Ascites and Intraabdominal Carcinomatosis in Mice.** *Cancer Res* 1984, **44**:5286-5290.
- Molpus KL, Koelliker D, Atkins L, Kato DT, Buczek-Thomas J, Fuller AF Jr, Hasan T: **Characterization of a xenograft model of human ovarian carcinoma which produces intraperitoneal carcinomatosis and metastases in mice.** *International Journal of Cancer* 1996, **68**:588-595.
- Rose GS, Tocco LM, Granger GA, DiSaia PJ, Hamilton TC, Santin AD, Hiserodt JC: **Development and characterization of a clinically useful animal model of epithelial ovarian cancer in the Fischer 344 rat.** *American Journal of Obstetrics and Gynecology* 1996, **175**:593-599.
- Sallinen H, Anttila M, Narvainen J, Orden M-R, Ropponen K, Kosma V-M, Heinonen S, Yla-Herttuala S: **A highly reproducible xenograft model for human ovarian carcinoma and application of MRI and ultrasound in longitudinal follow-up.** *Gynecologic Oncology* 2006, **103**:315-320.
- Chen W, Thoburn C, Hess AD: **Characterization of the Pathogenic Autoreactive T Cells in Cyclosporine-Induced Syngeneic Graft-Versus-Host Disease.** *J Immunol* 1998, **161**:7040-7046.
- Lee P, Rosen DG, Zhu C, Silva EG, Liu J: **Expression of progesterone receptor is a favorable prognostic marker in ovarian cancer.** *GynecolOncol* 2005, **96**:671-677.
- Cunat S, Hoffmann P, Pujol P: **Estrogens and epithelial ovarian cancer.** *Gynecologic Oncology* 2004, **94**:25-32.
- Ho S-M: **Estrogen, Progesterone and Epithelial Ovarian Cancer.** *Reproductive Biology and Endocrinology* 2003, **1**.
- van Doorn HC, Burger CW, Valk van der P, Bonfrer HMG: **Oestrogen, progesterone, and androgen receptors in ovarian neoplasia: correlation between immunohistochemical and biochemical receptor analyses.** *J Clin Pathol* 2000, **53**:201-205.
- Lee BH, Hecht JL, Pinkus JL, Pinkus GS: **WT1, Estrogen Receptor, and Progesterone Receptor as Markers for Breast or Ovarian Primary Sites in Metastatic Adenocarcinoma to Body Fluids.** *American Journal of Clinical Pathology* 2002, **117**:745-750.
- Chadha S, Rao BR, Slotman BJ, van Vroonhoven CCJ, Kwast van der TH: **An immunohistochemical evaluation of androgen and progesterone receptors in ovarian tumors.** *Human Pathology* 1993, **24**:90-95.

27. Ordóñez NG: Value of estrogen and progesterone receptor immunostaining in distinguishing between peritoneal mesotheliomas and serous carcinomas. *Human Pathology* 2005, **36**:1163-1167.
28. Verri E, Guglielmini P, Puntoni M, Perdelli L, Papadia A, Lorenzi P, Rubagotti A, Ragni N, Boccardo F: HER2/neu Oncoprotein Overexpression in Epithelial Ovarian Cancer: Evaluation of its Prevalence and Prognostic Significance. *Oncology* 2005, **68**:154-161.
29. Nielsen JS, Jakobsen E, Holund B, Bertelsen K, Jakobsen A: Prognostic significance of p53, Her-2, and EGFR overexpression in borderline and epithelial ovarian cancer. *International Journal of Gynecological Cancer* 2004, **14**:1086-1096.
30. Chauhan SC, Singh AP, Ruiz F, Johansson SL, Jain M, Smith LM, Moniaux N, Batra SK: Aberrant expression of MUC4 in ovarian carcinoma: diagnostic significance alone and in combination with MUC1 and MUC16 (CA125). *Mod Pathol* 2006, **19**:1386-1394.
31. Kildal W, Risberg B, Abeler VM, Kristensen GB, Sudbø J, Nesland JM, Danielsen HE: [beta]-catenin expression, DNA ploidy and clinicopathological features in ovarian cancer: A study in 253 patients. *European Journal of Cancer* 2005, **41**:1127-1134.
32. McCluggage WG, Strand K, Abdulkadir A: Immunohistochemical localization of metallothionein in benign and malignant epithelial ovarian tumors. *International Journal of Gynecological Cancer* 2002, **12**:62-65.
33. Bayani J, Brenton JD, Macgregor PF, Beheshti B, Albert M, Nallainathan D, Karaskova J, Rosen B, Murphy J, Laframboise S, *et al*: Parallel Analysis of Sporadic Primary Ovarian Carcinomas by Spectral Karyotyping, Comparative Genomic Hybridization, and Expression Microarrays. *Cancer Res* 2002, **62**:3466-3476.
34. Surowiak P, Materna V, Kaplenko I, Spaczyński M, Dietel M, Lage H, Zabel M: Augmented expression of metallothionein and glutathione S-transferase pi as unfavourable prognostic factors in cisplatin-treated ovarian cancer patients. *Virchows Archiv* 2005, **447**:626-633.
35. Yamada M, Tomida A, Yoshikawa H, Taketani Y, Tsuruo T: Increased expression of thioredoxin/adult T-cell leukemia-derived factor in cisplatin-resistant human cancer cell lines. *Clin Cancer Res* 1996, **2**:427-432.
36. Wei S-H, Lin F, Wang X, Gao P, Zhang H-Z: Prognostic significance of stathmin expression in correlation with metastasis and clinicopathological characteristics in human ovarian carcinoma. *Acta Histochemica* 2008, **110**:59-65.
37. Balachandran R, Welsh MJ, Day BW: Altered levels and regulation of stathmin in paclitaxel-resistant ovarian cancer cells. *Oncogene* 2003, **22**:8924-8930.
38. Alaiya AA, Franzén B, Fujioka K, Moberger B, Schedvins K, Silfversvärd C, Linder S, Auer G: Phenotypic analysis of ovarian carcinoma: Polypeptide expression in benign, borderline and malignant tumors. *International Journal of Cancer* 1997, **73**:678-682.
39. Martoglio AM, Tom BD, Starkey M, Corps AN, Charnock-Jones DS, Smith SK: Changes in tumorigenesis- and angiogenesis-related gene transcript abundance profiles in ovarian cancer detected by tailored high density cDNA arrays. *Mol Med* 2000, **6**:750-765.
40. Ziltener HJ, Maines-Bandiera S, Schrader JW, Auersperg N: Secretion of bioactive interleukin-1, interleukin-6, and colony-stimulating factors by human ovarian surface epithelium. *Biol Reprod* 1993, **49**:635-641.
41. Johanna GW, Asschert EV, Ruiters HJMarcel, de Vries GEElisabeth: Regulation of spontaneous and TNF/IFN-induced IL-6 expression in two human ovarian-carcinoma cell lines. *International Journal of Cancer* 1999, **82**:244-249.
42. Wang ZY, Gaggero A, Rubartelli A, Rosso O, Miotti S, Mezzanzanica D, Canevari S, Ferrini S: Expression of interleukin-18 in human ovarian carcinoma and normal ovarian epithelium: Evidence for defective processing in tumor cells. *International Journal of Cancer* 2002, **98**:873-878.
43. Bozkurt N, Yuce K, Basaran M, Gariboglu S, Kose F, Ayhan A: Correlation of serum and ascitic IL-12 levels with second-look laparotomy results and disease progression in advanced epithelial ovarian cancer patients. *International Journal of Gynecological Cancer* 2006, **16**:83-86.

doi:10.1186/1757-2215-3-9

Cite this article as: Sharrow *et al.*: Identification and characterization of a spontaneous ovarian carcinoma in Lewis rats. *Journal of Ovarian Research* 2010 **3**:9.

Submit your next manuscript to BioMed Central and take full advantage of:

- Convenient online submission
- Thorough peer review
- No space constraints or color figure charges
- Immediate publication on acceptance
- Inclusion in PubMed, CAS, Scopus and Google Scholar
- Research which is freely available for redistribution

Submit your manuscript at  
[www.biomedcentral.com/submit](http://www.biomedcentral.com/submit)

